

New!

OMRON

Authorised Distributors:-

Intech Systems Chennai Pvt. Ltd, Chennai-600 032

Ph: 4353 8888 Mob: 99 4353 8888 Fax: 044 4353 7888

F210 E-mail: info@intechchennai.com Website: www.intechchennai.com

Vision Sensor

New Application Software Package

Flow Menus and Macro Capability

F210

Reduce the overhead involved
in system planning and introduction.

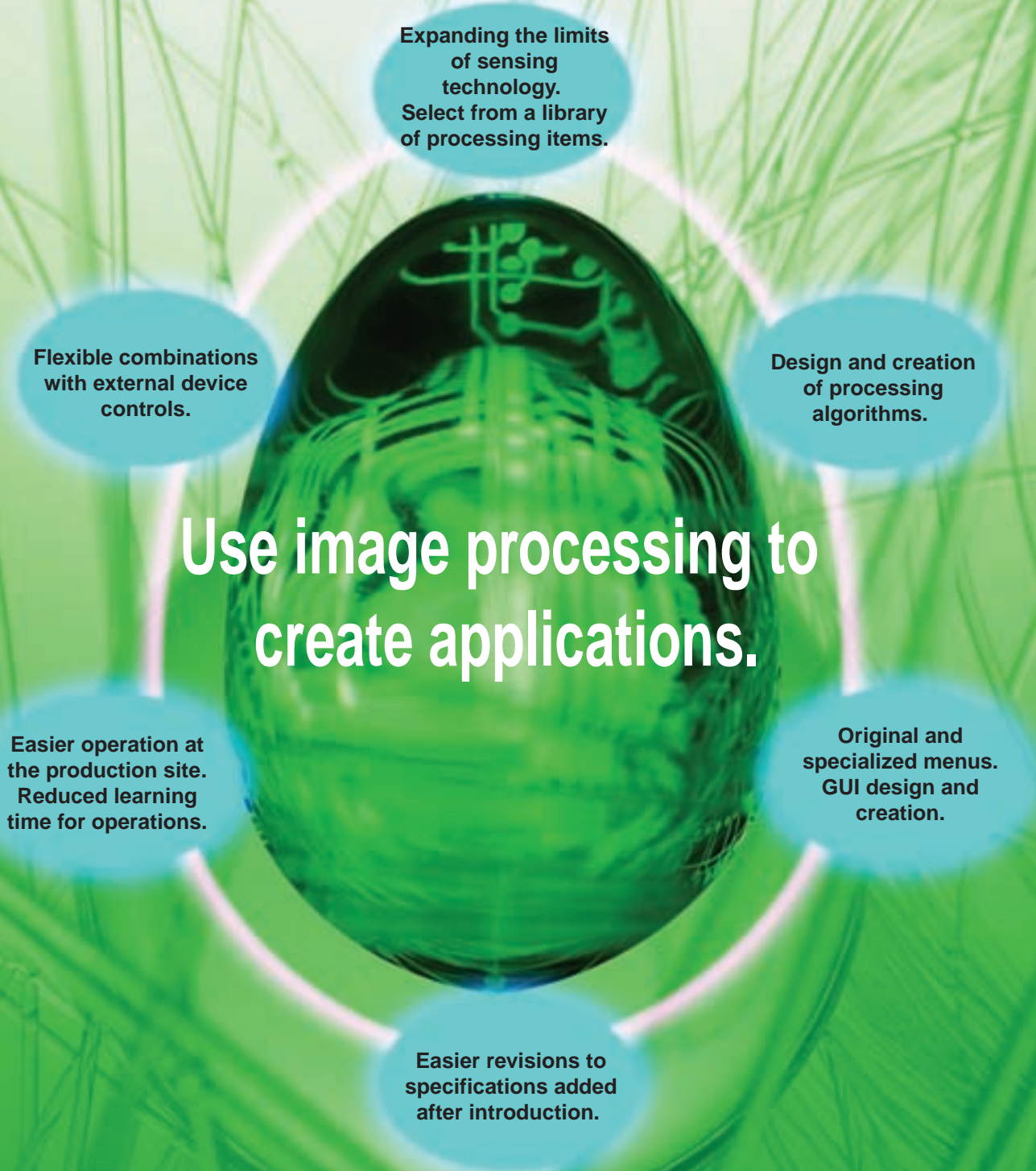
realizing



New Application Software Package

The Flow Menus and Macros of the F500-UM3FE/UM3ME greatly reduce the design and technical work involved in creating applications.

Application requirements in the production process for inspections, dimension measurements, and positioning have been becoming more varied and complex every year. OMRON has developed a software package to reduce the design and technical work required in creating image-processing applications. With this software package, applications can now be created quickly and simply.



This new software package is compatible with the newly released F210, as well as with the high-performance F250 Vision Sensor. The know-how and assets from previously created software can be passed on and developed for other models as well.

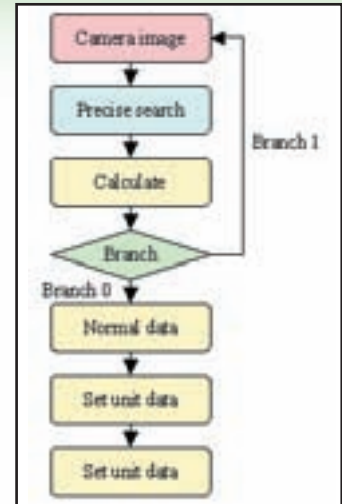
The Three Features of Flow Menus and Macros

Flow Menus

Flow Menus select the required processing items from the library, combining and linking them for you.

Ideal for the following:

- Stabilize measurement images by filtering the required number of times.
- Perform measurements according to workpiece tolerance by changing the measurement area based on measurement results.
- Periodically check for data variations by outputting the maximum and minimum values for each 10 measurements.



Macros

Augment Flow Menus using a PC text editor. The software package can be edited using text commands to customize I/O controls, displays, and a GUI.

Programs can be created using only a text editor, with no need for any special development environment.

Ideal for the following:

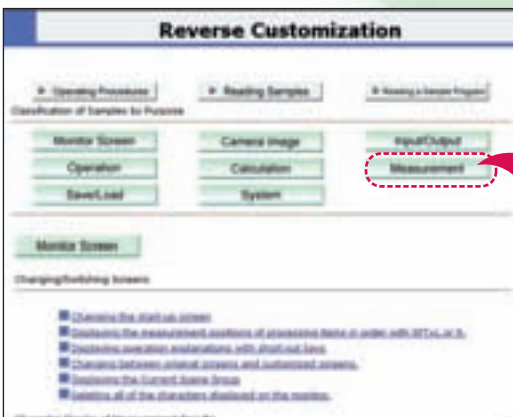
- Creating special menus.
- Displaying and outputting the date and time of NG measurements.
- Automatically saving NG images to a Memory Card.
- Changing the number of registered product types.



Special menus using macros

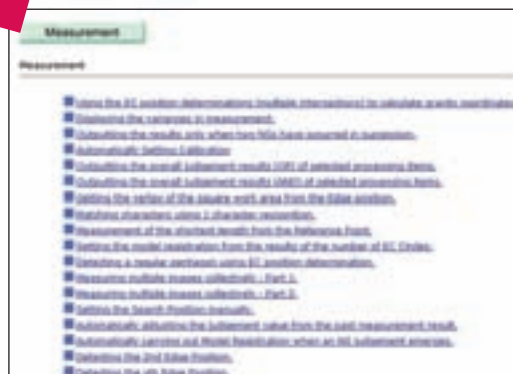
Customization Manual

The know-how from the past is incorporated in a manual so that Reverse Customization can be used to determine the best method to execute the desired process.



● Building Flow Menus and Using Macros

When an item is selected for operation, a sample program and explanation are displayed. Multiple samples can be easily combined.

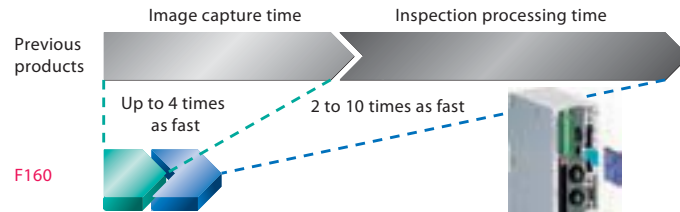


Introducing OMRON Vision Sensors



Can also be easily introduced to ultra high-speed processing lines.

- Images from the F160-S2 Double-speed Camera are input up to 4 times faster than conventional OMRON products.
- Inspection functions (gray searches, detection of scratches, soiling, etc.) are 2 to 10 times faster than previous OMRON products.



Equipped with a Memory Card

- Allows easy use on multi-product lines by simply increasing the number of scenes.

Customize function allows the F160 to be tailored to specific production needs.

- Shortcut keys
- Password setting
- Screen message customization on measurement screens, color displays, and much more.

F160 Vision Sensor

For details, refer to the F160 Vision Sensor (catalog No. Q133-E1-□)

This document provides information mainly for selecting suitable models. Please read the Setup Manual (SCHB-738) carefully for information that the user must understand and accept before purchase, including information on warranty, limitations of liability, and precautions.

OMRON Corporation
Industrial Automation Company
Sensing Devices Division H.Q.
Application Sensors Division
Shiokoji Horikawa, Shimogyo-ku,
Kyoto, 600-8530 Japan
Tel: (81) 75-344-7068/Fax: (81) 75-344-7107

Regional Headquarters
OMRON EUROPE B.V.
Sensor Business Unit
Carl-Benz-Str. 4, D-71154 Nufringen,
Germany
Tel: (49) 7032-811-0/Fax: (49) 7032-811-199

OMRON ELECTRONICS LLC
One Commerce Drive Schaumburg,
IL 60173-5302 U.S.A.
Tel: (1) 847-843-7900/Fax: (1) 847-843-7787

OMRON ASIA PACIFIC PTE. LTD.
No. 438A Alexandra Road # 05-05/08 (Lobby 2),
Alexandra Technopark, Singapore 119967
Tel: (65) 6835-3011/Fax: (65) 6835-2711

OMRON (CHINA) CO., LTD.
Room 2211, Bank of China Tower,
200 Yin Cheng Zhong Road,
PuDong New Area, Shanghai, 200120, China
Tel: (86) 21-5037-2222/Fax: (86) 21-5037-2200

In the interest of product improvement,
specifications are subject to change without notice.

CSM_F210_CA_E_1_1
Cat. No. Q132-E1

OMRON Industrial Automation Global: www.ia.omron.com

Printed in Japan



Authorised Distributors:-

Intech Systems Chennai Pvt. Ltd

S-2, Thiru. Vi. Ka. Industrial Estate, Guindy, Chennai-600 032
Ph: 4353 8888 Mob: 99 4353 8888 (Board Line) Fax: 044 4353 7888
E-mail: info@intechchennai.com Website: www.intechchennai.com