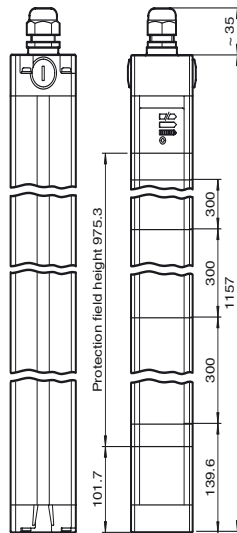
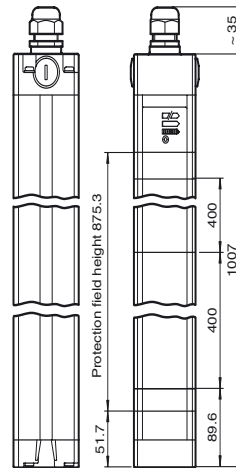




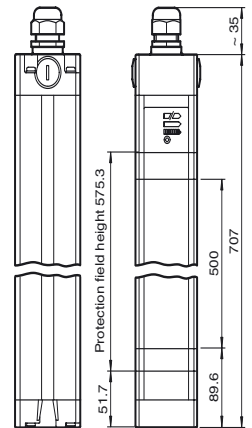
Dimensions



SLC-4



SLC-3



SLC-2

Model Number

SLC-2

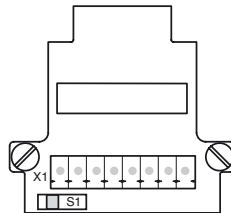
with 2 separate fail-safe semiconductor outputs

Features

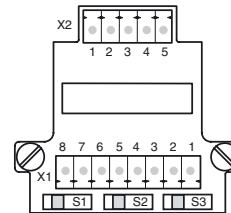
- Sensing range up to 20 m
- 2, 3, and 4-beam design
- Beam distance 300, 400 and 500 mm
- Self-monitoring (type 4 according to IEC/EN 61496-1)
- Start/Restart disable
- Degree of protection IP67
- 7-segment diagnostic display
- Pre-fault indication
- Safety outputs OSSD in potential-separated semiconductor design or with monitored, compelled connection NC-contacts

Electrical connection

Emitter:



Receiver:



| terminal | emitter | receiver (relay output) | receiver (semiconductor output) |
|----------|---------------------|----------------------------------|---------------------------------|
| X1:1 | Functional earth | Functional earth | Functional earth |
| X1:2 | | test (input) | Test (input) |
| X1:3 | | OSSD2.2 (output) | 0 V OSSD |
| X1:4 | | OSSD1.2 (output) | 24 V OSSD |
| X1:5 | | OSSD2.1 (output) | OSSD2 (output) |
| X1:6 | | OSSD1.1 (output) | OSSD1 (output) |
| X1:7 | 0 V AC/DC | 0 V AC/DC | 0 V DC |
| X1:8 | 24 V AC/DC | 24 V AC/DC | 24 V DC |
| X2:1 | | Start release (output) | Start release (output) |
| X2:2 | | Status OSSD (output) | Status OSSD (output) |
| X2:3 | not placed on board | 24 V reference potential for I/O | n. c. |
| X2:4 | | 0 V reference potential for I/O | n. c. |
| x2:5 | | Startup readiness (input) | Startup readiness (input) |

Release date: 2018-04-23 12:38 Date of issue: 2018-04-23 11:6091_eng.xml

Refer to "General Notes Relating to Pepperl+Fuchs Product Information".

Pepperl+Fuchs Group
www.pepperl-fuchs.com

USA: +1 330 486 0001
fa-info@us.pepperl-fuchs.com

Germany: +49 621 776 4411
fa-info@de.pepperl-fuchs.com

Singapore: +65 6779 9091
fa-info@sg.pepperl-fuchs.com

Technical data**System components**

| | |
|----------|---------|
| Emitter | SLC-2-T |
| Receiver | SLC-2-R |

General specifications

| | |
|---------------------------------------|---|
| Effective detection range | 0.2 ... 20 m |
| Light source | IRED |
| Light type | modulated infrared light |
| LED risk group labelling | exempt group |
| Tests | IEC/EN 61496 |
| Safety type according to IEC/EN 61496 | 4 |
| Target size | 50 mm |
| Beam spacing | 500 mm |
| Number of beams | 2 |
| Operating mode | can be selected with or without start/restart disable |
| Angle of divergence | < 5 ° |

Functional safety related parameters

| | |
|--------------------------------|----------|
| Safety Integrity Level (SIL) | SIL 3 |
| Performance level (PL) | PL e |
| Category | Cat. 4 |
| Mission Time (T _M) | 20 a |
| PFH _d | 7.27 E-9 |
| Type | 4 |

Indicators/operating means

| | |
|-----------------------|--|
| Operation indicator | 7-segment display in emitter |
| Diagnostics indicator | 7-segment display in receiver |
| Function indicator | in receiver: LED red: OSSD off LED green: OSSD on LED yellow: Protected area free, system start-ready |
| Pre-fault indicator | LED orange |
| Control elements | switch for start/restart disable, transmission coding |

Electrical specifications

| | | |
|------------------------|----------------|-----------------------------------|
| Operating voltage | U _B | 24 V DC (-30 %/+25 %) |
| No-load supply current | I ₀ | Emitter: 100 mA , receiver 150 mA |
| Protection class | | III |

Input

| | |
|--------------------|-----------------------------|
| Activation current | approx. 10 mA |
| Activation time | 0.03 ... 1 s |
| Test input | Reset-input for system test |
| Function input | Start release |

Output

| | |
|-------------------|---|
| Safety output | 2 separated fail safe semiconductor outputs |
| Signal output | 1 PNP each, max. 100 mA for start readiness and OSSD status |
| Switching voltage | Operating voltage -2 V |
| Switching current | max. 0.5 A |
| Response time | 10 ms |

Conformity

| | |
|-------------------|--------------------------|
| Functional safety | ISO 13849-1 |
| Product standard | EN 61496-1 ; IEC 61496-2 |

Ambient conditions

| | |
|---------------------|--------------------------------|
| Ambient temperature | 0 ... 55 °C (32 ... 131 °F) |
| Storage temperature | -25 ... 70 °C (-13 ... 158 °F) |
| Relative humidity | max. 95 %, not condensing |

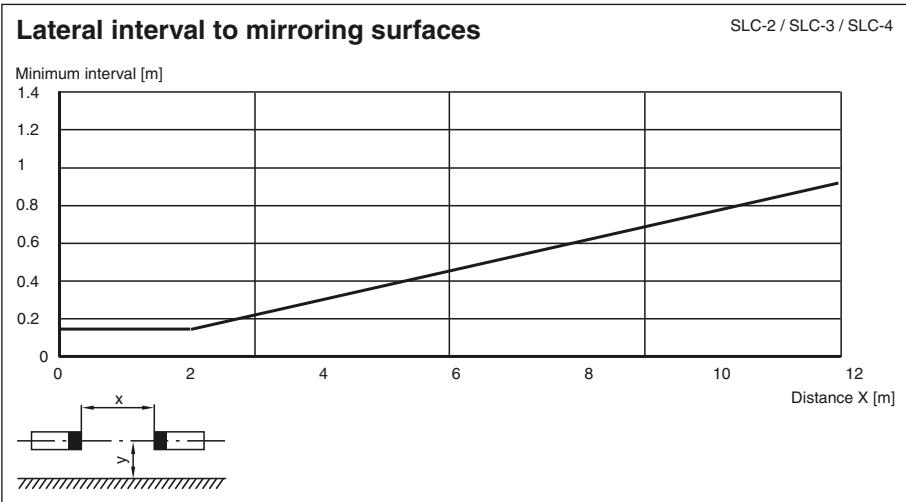
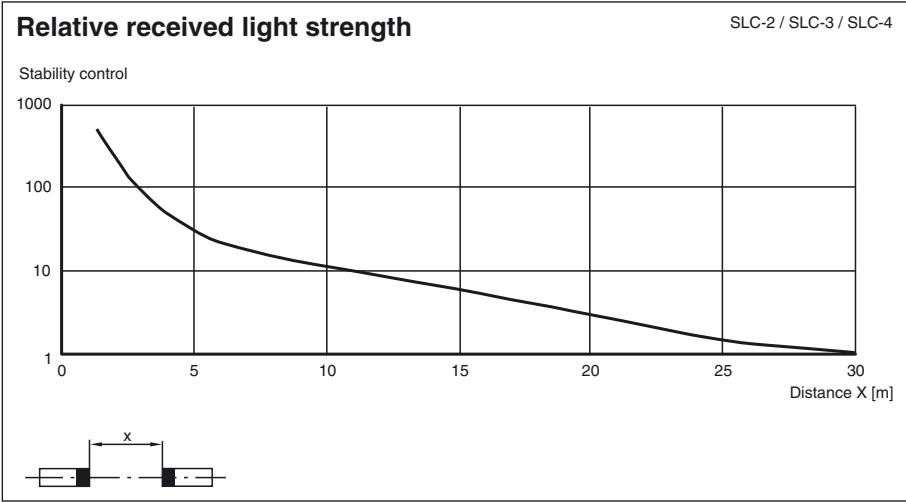
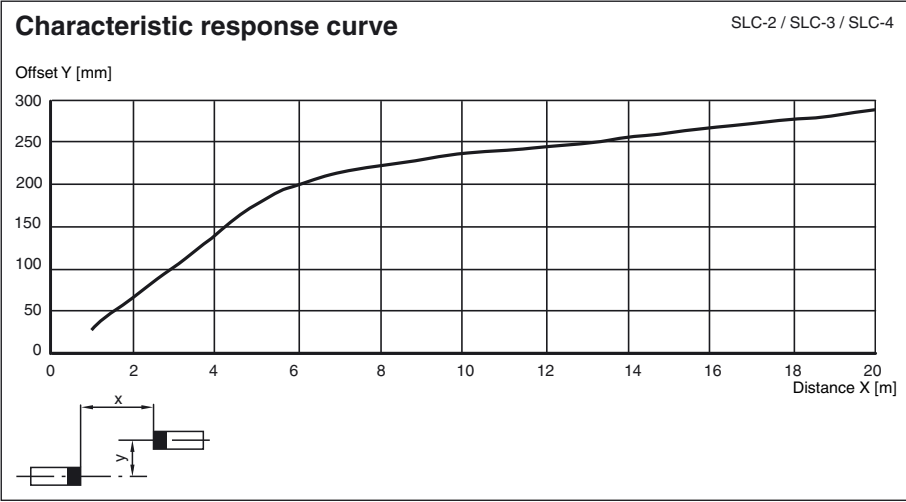
Mechanical specifications

| | |
|----------------------|--|
| Degree of protection | IP67 |
| Connection | M20 cable gland , terminal compartment with screw terminals, lead cross-section max. 1.5 mm ² |
| Connection options | Further electrical connection options on request: Connector M12, 8-pin Connector DIN 43 651 Hirschmann, 6-pin+PE Connector M26x11 Hirschmann, 11-pin+PE |
| Material | |
| Housing | extruded aluminum profile, RAL 1021 (yellow) coated |
| Optical face | Plastic pane |
| Mass | Per 2100 g |

Approvals and certificates

| | |
|---------------|--|
| CE conformity | CE |
| UL approval | cULus Listed |
| CCC approval | CCC approval / marking not required for products rated ≤36 V |
| TÜV approval | TÜV |

Curves/Diagrams

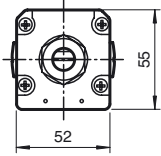


Release date: 2018-04-23 12:38 Date of issue: 2018-04-23 11:6091_eng.xml

Refer to "General Notes Relating to Pepperl+Fuchs Product Information".

Additional information

Profile dimensions, front view



System accessories

- Mounting set SLC
- Protective glass pieces for SLC (to protect the optically functional surface)
- Lateral screwed connection SLC
- Mirror 2, 3 or 4-beam for SLC (for multi-side securing of hazardous areas)
- Laser alignment aid BA SLC
- Profile alignment aid PA SLP/SLC
- Ground pillar UC SLP/SLC
- Housing for ground pillar Enclosure UC SLP/SLC
- Collision protector Damping UC SLP/SLC